

# THE SMART GUIDE SYSTEM

Award-winning dental laboratory Ambridge Ceramics is the only UK lab to offer the new Smart Guide System (SGS) - a process for creating digitally printed implant surgery guides

## What is the Smart Guide System (SGS)?

The (SGS) consists of a digitally planned and designed, 3D printed, implant surgical guide complete with a CAD/CAM, PMMA multilayer shaded, screw-retained provisional crown or healing abutment.

## Why use the Smart Guide System?

The SGS can save you time by reducing the appointments needed when restoring with implants, as you can place a provisional on the day of surgery. Using SGS will help condition the soft tissue around the implant site into an ideal gingival shape for the definitive restoration.

## How does it work?

1. You send the patient for a CT scan, STL or impression.

2. Send the information into Ambridge Ceramics. Call us and we will collect.

3. We will design both the surgical guide and the screw-retained restoration.

4. You check and adjust the design on Blue Sky Plan (we'll show you how).

5. Five days later you have a guide and restoration and/or healing abutment to fit on the day of surgery.

• Blue Sky Plan is treatment planning software for computer-guided surgery, developed and distributed by Blue Sky Bio. Ambridge Ceramics is the only UK authorised laboratory for the production of guides through Blue Sky Plan. ●



### AMBRIDGE CERAMICS

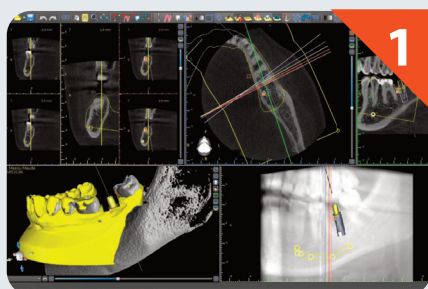
Smart Guide System is available from £249

TELEPHONE: 01765 607347

WEBSITE: [www.ambridgeceramics.com](http://www.ambridgeceramics.com)



## Introducing the SmartGuideSystem SGS by Ambridge Ceramics. 'Easy as...1, 2, 3, 4, 5'



**Special offer price only £249**

### AMBRIDGE CERAMICS

Premier House, College Road, Ripon HG4 2BP

Phone: 01765 607347 [www.ambridgeceramics.com](http://www.ambridgeceramics.com)

email: [info@ambridgeceramics.com](mailto:info@ambridgeceramics.com)

